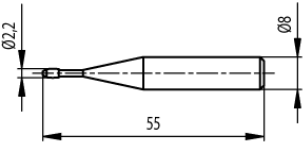
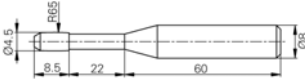

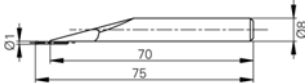
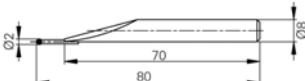

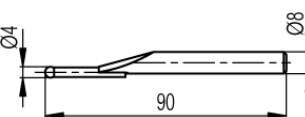


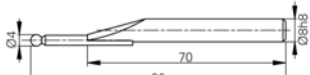
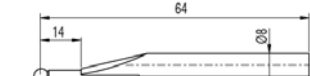
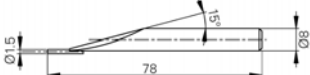

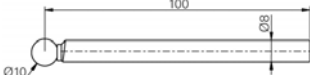
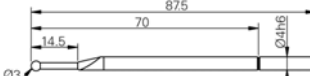
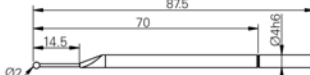
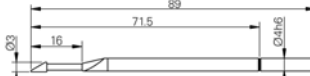


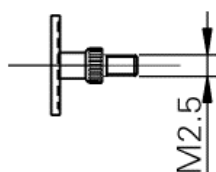
Accessoires | Zubehör | Accessories

V3 ÷ V9

		V3	V4	V5	V6	V7	V9
	TVA9.1 509 05 20 0011 Touche en tonneau M3-M16, L=55 mm Balliger Messeinsatz M3-M16, L=55 mm barrel-shaped insert M3-M16, L=55 mm	■	■	■	■	■	■
	TVA9.2 509 05 20 0029 Touche en tonneau M6-M48, L=60 mm Balliger Messeinsatz M6-M48, L=60 mm barrel-shaped insert M6-M48, L=60 mm	■	■	■	■	■	■
	TVA9.3 509 05 20 0062 Touche en tonneau M12-M150, L=60 mm Balliger Messeinsatz M12-M150, L=60 mm barrel-shaped insert M12-M150, L=60 mm	■	■	■	■	■	■
	TA-MI-111 509 05 20 0078 Touche à bille métal dur Ø1 mm, L=75 mm Messeinsatz mit Hartmetall-Kugel Ø1 mm, L=75 mm Measuring insert with tungst. carb. ball, Ø1 mm, L=75 mm	■	■	■	■	■	■
	TA-MI-110 509 05 20 0077 Touche à bille en métal dur Ø2 mm, L=80 mm Messeinsatz mit Hartmetall-Kugel Ø2 mm, L=80 mm Measuring insert with tungst. carb. ball Ø2 mm, L=80 mm	■	■	■	■	■	■
	TA-MI-104 509 05 20 0080 Touche à bille métal dur Ø2 mm, L=130 mm Messeinsatz mit Hartmetall-Kugel Ø2 mm, L=130 mm Measuring insert with tungst. carb. ball Ø2mm, L=130 mm	■	■	■	■	■	■
	TA-MI-102 509 05 20 0075 Touche à bille métal dur Ø4mm, L=90 mm Messeinsatz mit Hartmetall-Kugel Ø4 mm, L=90 mm Measuring insert with tungst. carb. ball Ø4 mm, L=90 mm	■	■	■	■	■	■

	<p>TA-MI-105 509 05 20 0079</p>	<p>Touche à bille métal dur, Ø4 mm, L=140 mm</p> <p>Messeinsatz mit Hartmetall-Kugel Ø4 mm, L=140 mm</p> <p>Measuring insert with tungst. carb. ball Ø4 mm, L=140 mm</p>							
	<p>TA-MI-106 279 918011 004</p>	<p>Touche à bille rubis Ø5 mm, L=129 mm</p> <p>Messeinsatz mit Rubin-Kugel Ø5 mm, L=129 mm</p> <p>Measuring insert with ruby ball Ø5 mm, L=129 mm</p>							
	<p>TA-MI-101 509 05 20 0074</p>	<p>Touche à bille rubis Ø4 mm, L=90 mm</p> <p>Messeinsatz mit Rubin-Kugel Ø4 mm, L=90 mm</p> <p>Measuring insert with ruby ball Ø4 mm, L=90 mm</p>							
	<p>TA-MI-119 SP279 918011 005</p>	<p>Touche à bille rubis Ø5 mm, L=64 mm</p> <p>Messeinsatz mit Rubin-Kugel Ø5 mm, L=64 mm</p> <p>Measuring insert with ruby ball Ø5 mm, L=64 mm</p>							
	<p>TA-MI-107 509 05 20 0081</p>	<p>Touche à goupille métal dur Ø1.5 mm, L=78 mm</p> <p>Zylindrischer Messeinsatz Ø1.5 mm, L=78 mm</p> <p>Measuring insert with pin Ø1.5 mm, L=78 mm</p>							
	<p>TA-MI-112 509 05 20 0082</p>	<p>Touche à surfaces planes, L=90 mm</p> <p>Messeinsatz mit Parallel-Messflächen, L=90 mm</p> <p>Measuring insert with parallel faces, L=90 mm</p>							
	<p>TA-MI-108 279 918011 002</p>	<p>Touche à bille rubis Ø10 mm, L=100 mm</p> <p>Messeinsatz mit Rubin-Kugel Ø10 mm, L=100 mm</p> <p>Measuring insert with ruby ball Ø10 mm, L=100 mm</p>							
	<p>TA-MI-109 279 918011 003</p>	<p>Touche à bille rubis Ø3 mm, L=87.5 mm</p> <p>Messeinsatz mit Rubin-Kugel Ø3 mm, L=87.5 mm</p> <p>Measuring insert with ruby ball Ø3 mm, L=87.5 mm</p>							
	<p>V-50.9 279 918011 001</p>	<p>Touche à bille rubis Ø2 mm, L=88 mm</p> <p>Messeinsatz mit Rubin-Kugel Ø2 mm, L=88 mm</p> <p>Measuring insert with ruby ball Ø2 mm, L=88 mm</p>							
	<p>V-50.10 279 918007 001</p>	<p>Touche biseautée</p> <p>Abgeschrägter Messeinsatz</p> <p>Knife-edge insert</p>							

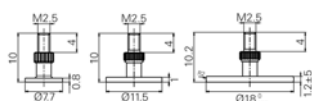
	<p>V-50.11 279 918013 001</p>	<p>Touche en tonneau Ø3 x 5 mm, L = 89 mm Balliger Messeinsatz Ø3 x 5 mm, L = 89 mm barrel-shaped insert Ø3 x 5 mm, L = 89 mm</p>	<p>■ ■ ■ ■ ■ ■</p>
	<p>V-50.12 279 918012 001</p>	<p>Touche à bille Ø1 mm avec porte-touche, L=86 mm Kugel-Messeinsatz Ø1 mm mit Halter, L=86 mm Measuring insert Ø1 mm with holder, L=86 mm</p>	<p>■ ■ ■ ■ ■ ■</p>
	<p>TA-MI-114 506 22 20 0063</p>	<p>Goupille, 1 face hémisphérique et 1 face plane, L=100 mm Stift, 1 halbkugelförmige und 1 flache Messfläche, L=100 mm Pin, 1 hemispheric and 1 plane face, L=100 mm</p>	<p>■ ■ ■ ■ ■ ■</p>
	<p>TA-MI-115 279 901001 001</p>	<p>Touche M1.4 avec bille Ø1 mm, L=12.5 mm Fühlhebelmesseinsatz M1.4 mit Kugel Ø1 mm, L=12,5 mm Measuring insert M1.4 with ball Ø1 mm, L=12.5 mm</p>	<p>■ ■ ■ ■ ■ ■</p>
	<p>TA-MI-116 279 901001 002</p>	<p>Touche M1.4 avec bille Ø2 mm, L=12.5 mm Fühlhebelmesseinsatz M1.4 mit Kugel Ø2 mm, L=12.5 mm Measuring insert M1.4 with ball Ø2 mm, L=12.5 mm</p>	<p>■ ■ ■ ■ ■ ■</p>
	<p>TA-MI-117 279 901001 003</p>	<p>Touche M1.4 avec bille Ø3 mm, L=12.5 mm Fühlhebelmesseinsatz M1.4 mit Kugel Ø3 mm, L=12.5 mm Measuring insert M1.4 with ball Ø3 mm, L=12.5 mm</p>	<p>■ ■ ■ ■ ■ ■</p>
	<p>V-50.4 279 918010 001</p>	<p>Touche hémisphérique M2,5 Messeinsatz M2.5 mit kugelförmiger Messfläche Measuring insert M2,5 with ball contact</p>	<p>■ ■ ■ ■ ■ ■</p>
	<p>TA-MI-118 279 901003 001</p>	<p>Touche M2.5 à 4 goupilles interchangeable, L=16/26/36/46 mm Messeinsatz M2.5 mit 4 wechselbaren Stiften, L=16/26/36/46 mm Measuring insert M2.5 with 4 interchangeable pins, L=16/26/36/46 mm</p>	<p>■ ■ ■ ■ ■ ■</p>
	<p>V-50.2.1 279 918005 002</p>	<p>Touche à disque M2.5, Ø7.7 mm Diskförmiger Messeinsatz M2.5, Ø7.7 mm Disc-shaped inserts M2.5, Ø7.7 mm</p>	<p>■ ■ ■ ■ ■ ■</p>
	<p>V-50.2.2 279 918005 003</p>	<p>Touche à disque M2.5, Ø11.5 mm Diskförmiger Messeinsatz M2.5, Ø11.5 mm Disc-shaped insert M2.5, Ø11.5 mm</p>	<p>■ ■ ■ ■ ■ ■</p>



V-50.2.3
279 918005 004

Touche à disque M2.5, Ø18 mm
Diskförmiger Messeinsatz M2.5, Ø18 mm
Disc-shaped inserts M2.5, Ø18 mm

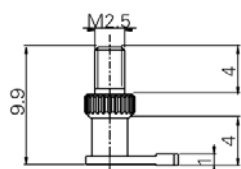
■	■	■	■	■	■	■



V-50.2
279 918005 001

Jeu de 3 touches à disque M2.5, Ø 7.7 / 11.5 / 18 mm
Satz mit 3 Diskförmigen Messeinsätzen M2.5, Ø 7.7 / 11.5 / 18 mm
Set of 3 disc-shaped inserts M2.5, Ø 7.7 / 11.5 / 18 mm

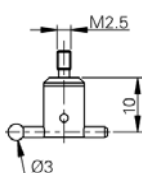
■	■	■	■	■	■	■
---	---	---	---	---	---	---



V-50.3
279 918008 001

Touche à pied M2.5
L-förmiger Messeinsatz M2.5
Corner insert M2.5

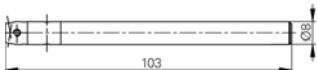
■	■	■	■	■	■	■
---	---	---	---	---	---	---



V-50.1
279 918009 001

Touche M2.5 à bille rubis orientable Ø3 mm
Messeinsatz M2.5 mit Rubin-Kugel Ø3 mm
Measuring insert M2.5 with ruby ball Ø3 mm

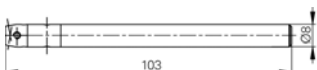
■	■	■	■	■	■	■
---	---	---	---	---	---	---



TA-IH-101
612 11 045

Porte-touche M2.5, L=103 mm
Messeinsatz-Halter M2.5, L=103 mm
Measuring insert holder M2.5, L=103 mm

■	■	■	■	■	■	■
---	---	---	---	---	---	---



TA-IH-103
612 11 047

Porte-touche 4-48, L=103 mm
Messeinsatz-Halter 4-48, L=103 mm
Measuring insert holder 4-48, L=103 mm

■	■	■	■	■	■	■
---	---	---	---	---	---	---



TA-IH-102
612 11 046

Porte-touche M2.5, L=300 mm
Messeinsatz-Halter M2.5, L=300 mm
Measuring insert holder M2.5, L=300 mm

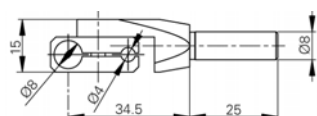
						■
--	--	--	--	--	--	---



TA-IH-119
612 11 048

Porte-touche (")4-48, L=300mm
Messeinsatz-Halter (")4-48, L=300mm
Measuring insert holder (")4-48, L=300mm

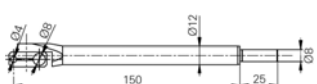
						■
--	--	--	--	--	--	---



TA-IH-104
612 11 053

Porte-touche orientable Ø4 et Ø8 mm
Orientabler Messeinsatz-Halter Ø4 und Ø8 mm
Swivel holder Ø4 and Ø8 mm

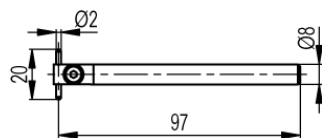
						■
--	--	--	--	--	--	---



TA-IH-105
612 11 051

Porte-touche orientable Ø4 et Ø8 mm, L=150 mm
Orientabler Messeinsatz-Halter Ø4 und Ø8 mm, L=150 mm
Swivel holder Ø4 and Ø8 mm, L=150 mm

■	■	■	■	■	■	■
---	---	---	---	---	---	---



TVA4
609 05 007

Porte-touche à tige Ø2 x 20 mm
 Messeinsatz-Halter mit Stift Ø 2 x 20 mm
 Insert holder with pin Ø2 x 20 mm

--	--	--	--	--	--	--



TA-IH-113
612 11 043

Porte-touche à tige Ø2 x 20 mm, L=200 mm
 Messeinsatz mit Stift Ø2 x 20 mm, L=200 mm
 Insert holder with pin Ø2 x 20 mm, L=200 mm

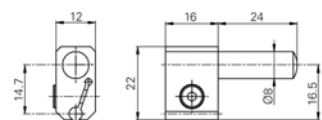
--	--	--	--	--	--	--



TA-IH-114
612 11 044

Porte-touche à tige Ø2 x 20 mm, L=300 mm
 Messeinsatz mit Stift Ø2 x 20 mm, L=300 mm
 Insert holder with pin Ø2 x 20 mm, L=300 mm

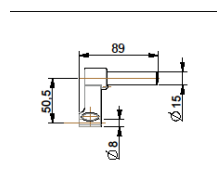
--	--	--	--	--	--	--



V-5
612 11 012

Reduction Ø 8 / 4 mm
 Reduktion Ø 8 / 4 mm
 Reduction Ø 8 / 4 mm

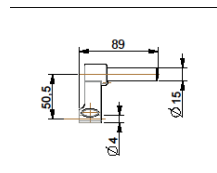
--	--	--	--	--	--	--



TA-IH-135
612 11 065

Porte-touche standard Ø8 mm
 Standard Messeinsatz-Halter Ø8 mm
 Standard insert holder Ø8 mm

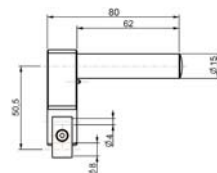
--	--	--	--	--	--	--



TA-IH-128
612 11 067

Porte-touche Ø4 mm
 Messeinsatz-Halter Ø4 mm
 Measuring insert holder Ø4 mm

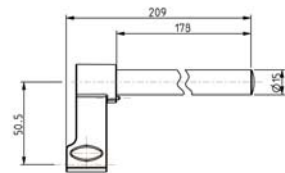
--	--	--	--	--	--	--



TA-IH-130
612 11 072

Porte-touche orientable Ø4 et Ø8 mm
 Orientabler Messeinsatz-Halter Ø4 und Ø8 mm
 Swivel holder Ø4 and Ø8 mm

--	--	--	--	--	--	--



TA-IH-136
612 11 073

Porte-touche Ø8 mm, L=200 mm, Support pour
 palpeur de perpendicularité
 Messeinsatz-Halter Ø8 mm, L=200 mm, Halter für
 Rechtwinkligkeitstaster
 Insert holder Ø8 mm, L=200 mm, Holder for
 perpendicularity probe

--	--	--	--	--	--	--



TA-IH-127
612 11 066

Porte-touche Ø8 mm, L=400 mm
 Messeinsatz-Halter Ø8 mm, L=400 mm
 Insert holder Ø8 mm, L=400 mm

--	--	--	--	--	--	--

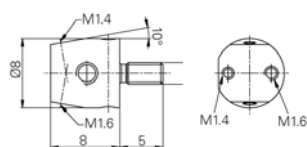


TA-IH-131
612 11 068

Porte-touche orientable Ø4 et Ø8 mm, L=400 mm
 Orientabler Messeinsatz-Halter Ø4 und Ø8 mm,
 L=400 mm
 Swivel holder Ø4 and Ø8 mm, L=400 mm

--	--	--	--	--	--	--

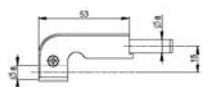
	<p>TA-IH-132 612 11 069</p>	<p>Porte-touche 90°, Ø4 mm, L=400 mm Messeinsatz-Halter 90°, Ø4 mm, L=400 mm Insert holder 90°, Ø4 mm, L=400 mm</p>	■	■	■	■	■	
	<p>TA-IH-133 612 11 070</p>	<p>Porte-touche à tige Ø2 x 20 mm, L=400 mm Messeinsatz-Halter mit Stift Ø 2 x 20 mm, L=400 mm Insert holder with pin Ø2 x 20 mm, L=400 mm</p>	■	■	■	■	■	
	<p>TA-IH-134 612 11 071</p>	<p>Porte-touche M2.5, L=400 mm Messeinsatz-Halter M2.5, L=400 mm Measuring insert holder M2.5, L=400 mm</p>	■	■	■	■	■	
	<p>V-50.6 279 918002 002</p>	<p>Porte-touche M2.5, L=80 mm Messeinsatz-Halter M2.5, L=80 mm Measuring insert holder M2.5, L=80 mm</p>	■	■	■	■	■	■
	<p>V-50.5 279 918002 001</p>	<p>Porte-touche M2.5, L=124 mm Messeinsatz-Halter M2.5, L=124 mm Measuring insert holder M2.5, L=124 mm</p>	■	■	■	■	■	■
	<p>TA-IH-115 279 918002 003</p>	<p>Porte-touche M2.5, L=200 mm Messeinsatz-Halter M2.5, L=200 mm Measuring insert holder M2.5, L=200 mm</p>	■	■	■	■	■	■
	<p>V-50.7 279 918001 002</p>	<p>Porte-touche à 90°, M2.5 Messeinsatz-Halter 90°, M2.5 Insert holder 90°, M2.5</p>	■	■	■	■	■	■
	<p>V-50.8 279 918001 001</p>	<p>Porte-touche à 90°, Ø4 mm Messeinsatz-Halter 90°, Ø4 mm Insert holder 90°, Ø4 mm</p>	■	■	■	■	■	■
	<p>TA-IH-116 279 918001 003</p>	<p>Porte-touche à tige, Ø1 x 10 mm, L=80 mm Messeinsatz mit Stift, Ø1 x 10 mm, L=80 mm Measuring insert holder, Ø1 x 10 mm, L=80 mm</p>	■	■	■	■	■	■
	<p>TA-IH-117 512 11 20 0012</p>	<p>Porte-touche pour touches M2.5, M1.6, M1.4 Halter für Messeinsätze M2.5, M1.6, M1.4 Holder for measuring inserts M2.5, M1.6, M1.4</p>	■	■	■	■	■	■



TA-IH-118
512 11 20 0013

Porte-touche pour touches 4-48, M1.6, M1.4
 Halter für Messeinsätze 4-48, M1.6, M1.4
 Holder for measuring inserts 4-48, M1.6, M1.4

■	■	■	■	■	■	■



TA-IH-126
612 07 006

Support pour palpeur de perpendicularité
 Halter für Rechtwinkligkeitstaster
 Holder for perpendicularity probe

						■
--	--	--	--	--	--	---



TA-MS-101
276 940001 001

Palpeur de perpendicularité pour V6/V7/V9-400/700,
 (sans support - V6/V7: TA-IH-136 & V9: TA-IH-126)
 Rechtwinkligkeitstaster für V6/V7/V9-400/700, (ohne
 Halter - V6/V7: TA-IH-136 & V9: TA-IH-126)
 Perpendicularity probe for V6/V7/V9-400/700,
 (without support - V6/V7: TA-IH-136 & V9: TA-IH-126)

						■
						■
						■



TA-MS-102
276 940001 002

Palpeur de perpendicularité pour V6/V7/V9-1100,
 (sans support - V6/V7: TA-IH-136 & V9: TA-IH-126)
 Rechtwinkligkeitstaster für V6/V7/V9-1100, (ohne
 Halter - V6/V7: TA-IH-136 & V9: TA-IH-126)
 Perpendicularity probe for V6/V7/V9-1100, (without
 support - V6/V7: TA-IH-136 & V9: TA-IH-126)

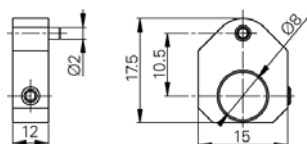
						■
						■
						■



TA-MS-104
609 02 021

Palpeur de perpendicularité pour V7-1800, (sans
 support TA-IH-136)
 Rechtwinkligkeitstaster für V7-1800, (ohne Halter TA-
 IH-136)
 Perpendicularity probe for V7-1800, (without support
 TA-IH-136)

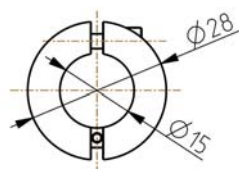
						■
--	--	--	--	--	--	---



TA-AD-101
603 11 001

Bague de positionnement de touche Ø8 mm
 Positionierhalter für Messeinsatz Ø8 mm
 Positioning holder for measuring insert Ø8 mm

■	■	■	■	■	■	■
---	---	---	---	---	---	---



TA-AD-105
603 11 003

Bague de positionnement de touche Ø15 mm
 Positionierhalter für Messeinsatz Ø15 mm
 Positioning holder for measuring insert Ø15 mm

■	■	■	■	■	■	■
---	---	---	---	---	---	---



TA-SE-106
605 01 022

Jeux d'accessoires "Macro" (16 pcs)
 Zubehörsatz "Macro" (16 Stk.)
 Set of accessories "Macro" (16 pcs)

■	■	■	■	■	■	■
---	---	---	---	---	---	---



TA-SE-102
605 01 008

Jeux d'accessoires "Micro" (20 pcs)
 Zubehörsatz "Micro" (20 Stk.)
 Set of accessories "Micro" (20 pcs)

						■
--	--	--	--	--	--	---



TA-SE-105
605 01 023

Jeux d'accessoires "Micro" (20 pcs)
 Zubehörsatz "Micro" (20 Stk.)
 Set of accessories "Micro" (20 pcs)

■	■	■	■	■	■	■
---	---	---	---	---	---	---



TA-SE-107
605 01 024

Jeux d'accessoires "Eco" (7 pcs)
Zubehörsatz "Eco" (7 Stk.)
Set of accessories "Eco" (7 pcs)

■	■	■	■	■	■	■



TA-MG-104
609 01 032

Jauge d'étalonnage 25 mm
Einstellehre 25 mm
Setting gauge 25 mm

■	■	■	■	■	■	■



V-60
612 12 045

Support de rangement pour accessoires
Zubehör-Ablagefach
Wooden accessories support

■	■	■	■	■	■	■



V-50.13
290 918001 001

Clé pour touche comparateur à levier
Schlüssel für Fühlhebelmesseinsatz
Wrench for measuring inserts

■	■	■	■	■	■	■



LABC-30.3
3708 0002

Stylo pour écran tactile
Stift für Touchscreen
Touch screen pen

				■	■	



TA-TO-102
614 00 007

Pièce de démonstration
Vorführungsteil
Demonstration piece

■	■	■	■	■	■	■



TA-TO-114
505 05 10 0041

Housse de protection pour V3 ÷ V9 - 400
Schutzhaube für V3 ÷ V9 - 400
Protection cover for V3 ÷ V9 - 400

■	■	■	■	■	■	■



TA-TO-115
505 05 10 0042

Housse de protection pour V3 ÷ V9 - 700
Schutzhaube für V3 ÷ V9 - 700
Protection cover for V3 ÷ V9 - 700

■	■	■	■	■	■	■



TA-TO-116
505 05 10 0043

Housse de protection pour V5 ÷ V9 - 1100
Schutzhaube für V5 ÷ V9 - 1100
Protection cover for V5 ÷ V9 - 1100

			■	■	■	■



TA-TO-117
505 05 10 0044

Housse de protection pour V7 - 1800
Schutzhaube für V7 - 1800
Protection cover for V7 - 1800

					■	

	TA-EL-112 333 0 0104	Câble pour connexion RS232-PC Kabel für RS232-PC-Verbindung Cable for RS232-PC connection	■	■	■	■	■	■
	TA-EL-013 332 02 0001	Câble de liaison USB A-B, L=1.8 m Verbindungskabel, USB A-B, L=1.8 m USB A-B connection cable, L=1.8 m					■	■
	TA-EL-014 332 02 0002	Câble de liaison USB A-Mini B, L=1.8m Verbindungskabel, USB A-Mini B, L=1.8m USB A-Mini B connection cable, L=1.8m	■	■	■	■		
	TA-EL-032 756 0018	Imprimante thermique avec support, chargeur et câble RS232 Thermodrucker mit Halter, Ladegerät und RS232-Kabel Thermal printer with holder, AC adapter and RS232 cable	■	■	■	■	■	■
	V-30.7 788 000001 001	Rouleaux de papier (5 pces) Papierrollen (5 Stk.) Paper rolls (5 pces)	■	■	■	■	■	■
	TA-EL-132 357 0112	Convertisseur AC/DC 100-240V/12V - 3A (avec adaptateur) Netzgerät AC/DC 100-240V/12V - 3A (mit Adapter) Adapter AC/DC 100-240V/12V - 3A (with adapter)	■	■	■	■	■	■
	TA-EL-140 358 0008	Memory stick USB, Compatible avec instruments Trimos USB memory stick, Kompatibel mit Trimos Instrumenten USB memory stick, Compatible with Trimos instruments					■	■
	TA-SW-002 394 1 0051	Logiciel de communication USB (TrimosDataTransfer) Software für USB-Datenübertragung (TrimosDataTransfer) Software for USB data transfer (TrimosDataTransfer)	■	■	■	■	■	■